

*John William Adcock*



John William Adcock was born April 8, 1867, on a farm south of Eldon, Miller County, Missouri. He began his steamboating career on the Osage and Missouri Rivers as a deckhand on the Frederick. He then worked as cook on the John R. Hugo. He returned to the Frederick where he obtained his Pilot's License. He was Pilot and Master of the J. R. Wells when it was commissioned in April, 1898, later becoming Captain. He was Pilot of the towboat Daniel Boone on the Corps of Engineers Missouri River Improvement Project. He maintained his Pilot's License until 1932. John William Adcock died July 22, 1961, age 94, in Jefferson City, Missouri.

915 West 7<sup>th</sup> Street  
Washington, Missouri 63090  
philandtarney@midwestis.net  
March 2, 2004

Washington Historical Society  
113 East 4<sup>th</sup> Street  
Washington, Missouri 63090

*A Little Piece of Missouri River History*

Included herein is my transcript of a report submitted by John William Adcock, Pilot of the towboat Daniel Boone, to the Corps of Engineers detailing activity for the ten-day period from May 1 to May 10, 1915. The work consisted primarily of moving barges loaded with willows or rock between various locations on the Missouri River from Gasconade, Missouri to the foot of Bonhomme Island near Chesterfield, Missouri. Mats woven of willow limbs, held in place with pilings and weighed down with rock were used to help stabilize the river.

Most of the places mentioned in the report are familiar to us today; i.e., Gasconade, Berger, New Haven, Marthasville, Washington, South Point, Centaur, Weldon Springs and Bonhomme Island. From mileage indicated in the report, Bacon's Landing was almost certainly at or near St. Albans. The Bacons were an early Missouri family, coming in around the time of the Louisiana Purchase and settling in St. Louis, St. Charles and Franklin Counties. There were many entries of public lands by Bacon family members before 1850 in the westernmost parts of St. Louis County near the Missouri River.

I have taken the liberty of adding some punctuation and making a few other minor changes in this transcript to render it more readable. A copy of the original report follows the transcript.

John William Adcock was great uncle of my husband, Phillip H. Smith. John's brother Samuel Arthur Adcock, Phillip's grandfather, also worked on steamboats for a while.

Sincerely,

Tarney Smith

IMPROVING: *Missouri River*

Report of Operation of *Towboat Daniel Boone*  
the 10 days ending *May 10<sup>th</sup>*

for  
1915

Post office address for next week *Gasconade, Mo.*

*Saturday May 1<sup>st</sup>*

1915

*Cleared from Berger Quarry downbound for Martins Camp at Marthasville at 6-00 a.m. Took on 50 barrows coal at New Haven. Proceeded downstream arrived at Martins Camp at 9-40 a.m. Proceeded to Washington for supplies and returned to Martins Camp. Went into Chute and picked up drivers and compressor and took them around to fleet. Picked up Quarter Boat and Barge. Tow now consisting of four pieces and proceeded upstream. Dropped fleet at Hodsons Camp and picked up Barge No 322 and cleared for Jones Camp at Weldon Springs. Tied up for the night at Washington at 6-30 p.m. Miles run downstream light 28. Miles run upstream light 4. Miles run upstream with tow 3. Miles run downstream 7.*

*Coal received Barrows 50. Coal consumed Barrows 30.*

*Pieces Handled 5*

*Sunday May 2<sup>nd</sup> - 1915*

*Cleared from Washington with Barge No 322 in tow downbound for Jones Camp at Weldon Springs at 6-00 a.m. Arrived Jones Camp at 9-30 a.m. Took Barge No 318 partly loaded with willows from Jones Camp to foot of Bonhomme Island. Tied up Boat at 11-30 a.m. Miles run downstream with tow 39.*

*Coal consumed Barrows 20. Pieces Handled 2*

*Monday May 3<sup>rd</sup> - 1915*

*Boat at Bonhomme Island waiting for Barge to be loaded with willows. Crew engaged in washing Boiler and painting Boat. Cleared from Bonhomme Island upbound with Barge No 318 loaded with willows at 5-00 p.m. Tied up for the night at Centaur*

*at 7-30 p.m. Miles run upstream with tow 10  
Coal consumed Barrows 15  
Pieces Handled 1*

*Tuesday May 4 – 1915*

*Cleared from Centaur with Barge No 318 in tow loaded with willows at 6-00 a.m. Tied up at New Haven at 6-00 p.m. – took on 40 barrows coal*

*Miles run upstream with tow 37.*

*Coal received Barrows 40*

*Coal consumed Barrows 30*

*Pieces Handled 1*

*Wednesday May 5 – 1915*

*Cleared from New Haven with Barge No 318 in tow loaded with willows at 5-30 a.m. Dropped Barge No 318 loaded with willows at Martins Camp at Rush Island and proceeded to Gasconade, Mo. Arrived at Gasconade at 11-45 a.m. Took on 75 barrows coal.*

*Miles run upstream with tow 13*

*Miles run upstream light 11*

*Coal received Barrows 75. Coal consumed Barrows 15*

*Pieces Handled 1*

*Thursday May 6 – 1915*

*Cleared from Gasconade downbound light for Berger at 8-20 a.m. Arrived at Berger at 9-25 a.m. Picked up Barge No 163 loaded with rock and proceeded upstream. Arrived at Gasconade at 12-40 p.m. Cleared from Gasconade with Barge No 153. Dropped Barge at Berger and proceeded downstream light. Picked up Barge No 323 at Hodsons Camp and proceeded downstream. Tied up at Washington at 7-00 p.m.*

*Miles run downstream light 32. Miles run upstream with tow 11*

*Miles run downstream with tow 18. Coal consumed Barrows 25*

*Pieces Handled 3*

*Friday May 7 – 1915*

*Cleared from Washington with Barge No 323 in tow downbound at 6-00 a.m. Dropped Barge No 323 at Bonhomme Island and returned to Jones Camp at Weldon Springs and tied up at 11-45 a.m. Making repairs and painting balance of day.*

*Miles run downstream with tow 32. Miles run upstream light 6  
Coal consumed Barrows 15*

*Pieces Handled 1*

*Saturday May 8 – 1915*

*Boat at Weldon Springs. Crew engaged in washing Boiler and painting while waiting for Barge to be loaded. Cleared from Jones Camp at Weldon Springs with Barge No 322 loaded with willows at 4-00 p.m. Tied up at Bacons Landing at 7-30 p.m.*

*Miles run upstream with tow 10*

*Coal consumed Barrows 15*

*Pieces Handled 1*

*Sunday May 9 – 1915*

*Cleared from Bacons Landing upbound with Barge No. 322 loaded with willows at 6-00 a.m. Took on 40 barrows coal at South Point. Tied up at Washington at 10-00 a.m. for balance of day. Miles run upstream with tow 16*

*Coal received Barrows 40*

*Coal consumed Barrows 20*

*Pieces Handled 1*

*Monday May 10 – 1915*

*Cleared from Washington upbound with Barge No 322 loaded with willows at 6-00 a.m. Dropped Barge No 322 loaded with willows at Hodsons Camp and picked up Barge No 325 with part load willows and proceeded upstream to Martins Camp.*

*Arrived at Martins Camp at 3-00 p.m. Dropped Barge No. 325 part load willows. Cleared from Martins Camp downbound light at 3-20 p.m. Picked up Barge No. 315 at Berger loaded with rock*

*and proceeded downstream. Tied up at New Haven at 5-30 p.m.*

*Took on 60 barrows coal at New Haven.*

*Miles run upstream with tow 30*

*“ “ “ light 3*

*“ “ Downstream with tow 13*

*Coal received Barrows 60*

*Coal consumed Barrows 30*

*Pieces Handled 3*

---

Summary of 10 days work.

---

Location of party or boat, first of period      *Berger Quarry*

Location of party or boat, end of period      *New Haven*

*On May 1<sup>st</sup> cleared from Berger Quarry downbound for Martins Camp at Marthasville. Arrived at Martins Camp and proceeded to Washington and returned to Martins Camp. Assembled fleet and made up tow and proceeded upstream and dropped fleet at Hodsons Camp and picked up Barge and proceeded to Jones Camp at Weldon Springs. Arrived at Jones Camp on the 2<sup>nd</sup> and proceeded to Bonhomme Island with Barge. Cleared from Bonhomme Island on the 3<sup>rd</sup> for Martins Camp at Rush Island. Arrived at Martins Camp and proceeded to Gasconade on the 5<sup>th</sup>. On the 6<sup>th</sup> cleared from Gasconade for Berger. Picked up Barge rock and returned to Gasconade. Cleared from Gasconade for Jones Camp at Weldon Springs. Arrived at Jones Camp on the 7<sup>th</sup>. Cleared from Jones Camp on the 8<sup>th</sup> and arrived at Hodsons Camp on the 10<sup>th</sup>. Proceeded to Martins Camp at Rush Island. Cleared from Martins Camp for Jones Camp at Weldon Springs.*

<i>Miles run upstream light</i>	<i>24</i>	<i>Coal on Boat first of period</i>	<i>90 B</i>
<i>“ “ with tow</i>	<i>130</i>	<i>Coal received during period</i>	<i><u>265</u></i>
<i>“ “ Downstream light</i>	<i>60</i>	<i>Total</i>	<i>355</i>
<i>“ “ with tow</i>	<i><u>109</u></i>		
<i>Total Miles run</i>	<i>323</i>		
<i>Coal on boat at end of period</i>	<i>140 Barrows</i>		
<i>Coal consumed during period</i>	<i><u>215</u></i>	<i>“</i>	
<i>Total</i>	<i>355</i>		
<i>Pieces Handled</i>		<i>19</i>	

---

Location: *New Haven*

Date *May 11<sup>th</sup>*

1915

Respectfully submitted

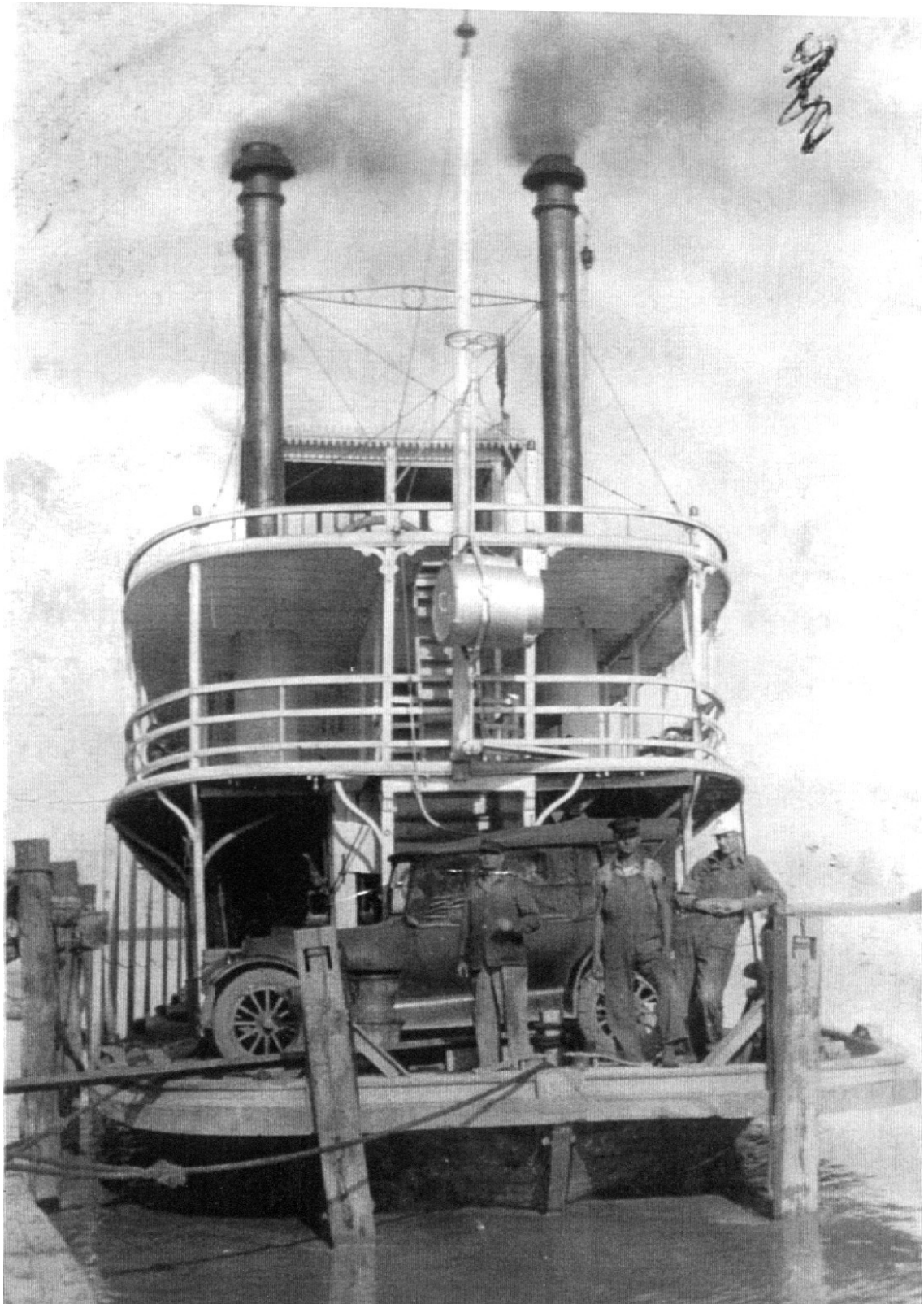
*John W. Adcock*

*Pilot*

Following are two pictures of the tug boat *Daniel Boone* taken at the Washington, Missouri Landing. Copies of these pictures were given to me by Marc Houseman, Director, Washington (MO) Museum. The date when these pictures were taken is unknown to me. These pictures are followed by images of the “log” written in John W. Adcock’s own hand that were included in Hilary Adcock Dunnaway’s “Adcock Family” written in October 1973.







IMPROVING

Missouri River

Report of Operations of  
the 10 days ending

Towboat Daniel Boone  
May 10<sup>th</sup>

for

1915

Post office address for next week

Gasconade, Mo.

Note—This report will be mailed promptly at the close of operations, 10th, 20th and last day of each month.

Saturday May 1<sup>st</sup>

1915

Cleared from Millberg Quarry downbound for Martins Camp at Martinsville at 6:00 A.M. Took on 50 Barrows Coal at New Haven. Proceeded downstream arrived at Martins Camp at 9:40 A.M. Proceeded to Washington for supplies and returned to Martins Camp. Went into Clinton and picked up driver and compresses and took them around to flat picked up Quartermaster Boat and Barge. Tow now consisting of four pieces and proceeded up stream dropped flat at Hudsons Camp and picked up Barge No 322 and cleared for Jones Camp at Waldon Springs. Tied up for the night at Washington at 6:30 P.M. Miles run downstream light 28

Miles run upstream light 4 Miles run upstream with tow 3 Miles run downstream with tow 7  
Coal received Barrows 50 Coal consumed Barrows 30  
Pieces handled 5

Sunday May 2<sup>nd</sup> — 1915

Cleared from Washington with Barge No 322 in tow downbound for Jones Camp at Waldon Springs at 6:00 A.M. arrived at Waldon Springs at 2:00 P.M. Barge No 318 partly loaded with willows from Jones Camp to foot of Bonhomme Island tied up Boat at 11:30 A.M. Miles run downstream with tow 39  
Coal consumed Barrows 20 Pieces handled 2

Monday May 3<sup>rd</sup> 1915

Boat at Bonhomme Island waiting for Barge to be loaded with willows crew engaged in washing boiler and painting boat. Cleared from Bonhomme Island upbound with Barge No 318 loaded with willows at 5:00 P.M. Tied up for the night at Centaur at 7:30 P.M. Miles run upstream with tow 10  
Coal consumed Barrows 15  
Pieces handled 1

Tuesday May 4

1915

Cleared from Centaur with Barge No 318 in tow loaded with willows at 6-00 A.M. tied up at New Haven at 6-00 P.M.

Took on 40 Barrows Coal

Miles run upstream with tow 37

Coal received Barrows 40

Coal consumed Barrows 30

Pieces Handled 1

Wednesday May 5

1915

Cleared from New Haven with Barge No 318 in tow loaded with willows at 5-30 A.M. dropped Barge No 318 loaded with willows at Martins Camp at Hursp Island and proceeded to Gasconade No. Arrived at Gasconade at 11-45 A.M. Took on 75 Barrows Coal

Miles run upstream with tow 13

Miles run upstream light 11

Coal received Barrows 75 Coal consumed Barrows 15

Pieces Handled 1

Thursday May 6

1915

Cleared from Gasconade downbound light for Barge at 8-20 A.M. arrived at Bergen at 9-25 A.M. Ricked up Barge No 163 loaded with Rock and proceeded upstream arrived at Gasconade at 12-40 P.M. Cleared from Gasconade with Barge No 163 dropped Barge at Bergen and proceeded downstream light. Ricked up Barge No 323 at Hadrono Camp and proceeded downstream tied up at Washington at 7-00 P.M.

Miles run downstream light 32 Miles run upstream with tow 11

Miles run downstream with tow 18 Coal consumed Barrows 25 Pieces Handled 3

Friday May 7

1915

Cleared from Washington with Barge No 323 in tow downbound at 6-00 A.M. dropped Barge No 323 at Bonhomme Island and returned to Jones Camp at Hildon Springs and tied up at 11-45 A.M. Making repairs and painting balance of day Miles run downstream with tow 32

Miles run upstream light 6

Coal consumed Barrows 15

Pieces Handled 1



Saturday May 8

1915

Boat at Weldon Springs. Crew engaged in washing boiler and painting. While waiting for Barge to be loaded cleared from Jones Camp. At Weldon Springs with Barge No 322 loaded with willows at 4-00 P.M. tied up at Bacon Landing at 7-30 P.M.

Miles run upstream with tow 10  
Coal Consumed Barrows 15  
Pieces Handled 1

Sunday May 9

1915

Cleared from Bacon's Landing upbound with Barge No 322 loaded with willows at 6-00 A.M. took on 40 Barrows coal at South Point tied up at Washington at 10-00 A.M. for balance of day

Miles run upstream with tow 16  
Coal received Barrows 40  
Coal Consumed Barrows 20  
Pieces Handled 1

Monday May 10

1915

Cleared from Washington upbound with Barge No 322 loaded with willows at 6-00 A.M. dropped Barge No 322 loaded with willows at Hudsons Camp and picked up Barge No 325 with part load willows and proceeded upstream to Martins Camp. At Martins Camp at 3-00 P.M. dropped Barge No 325 with part load willows cleared from Martins Camp downbound light at 3-20 P.M. picked up Barge No 317 at Bacon's loaded with coal and proceeded downstream till up at New Haven at 5-30 P.M. took on 60 Barrows coal at New Haven.

Miles run upstream with tow 30  
" " light 3  
" " down stream with tow 13  
Coal received Barrows 60  
Coal Consumed Barrows 30  
Pieces Handled 3

Summary of 10 days work.

Location of party or boat, first of period

Berger Quarry

Location of party or boat, end of period

New Haven

On May 1<sup>st</sup> Cleared from Berger Quarry downstream for Martins Camp at Mathasville. Arrived at Martins Camp and proceeded to Washington and returned to Martins Camp. Assembled fleet and made up tow and proceeded up stream dropped fleet at Hodsons Camp and picked up Barge and proceeded to Jones Camp at Weldon Springs. Arrived at Jones Camp on the 2<sup>nd</sup> and proceeded to Bonhomme Island with Barge. Cleared from Bonhomme Island on the 3<sup>rd</sup> for Martins Camp at Rush Island. Arrived at Martins Camp and proceeded to Gasconade on the 5<sup>th</sup> on the 6<sup>th</sup> Cleared from Gasconade for Berger. Picked up Barge and returned to Gasconade. Cleared from Gasconade for Jones Camp at Weldon Springs. Arrived at Jones Camp on the 7<sup>th</sup>. Cleared from Jones Camp on the 8<sup>th</sup> and arrived at Hodsons Camp on the 10<sup>th</sup>. Proceeded to Martins Camp at Rush Island. Cleared from Martins Camp for Jones Camp at Weldon Springs.

Miles Run upstream light	24	Coal on Boat first of period	90.13
" " " " " " " "	100	Coal received during period	215
" " " " " " " "	100	Total	305
" " " " " " " "	109		
Total Miles run	323		

Coal on Boat at end of Period 140 Barrows  
 Coal Consumed during Period 215 " "  
 Total 355  
 Pieces Handled 19

Respectfully submitted

Location: New Haven, Mo.  
 Date May 11<sup>th</sup> 1915

John W. Adcock  
 Pilot

Do not Write beyond this line.